
JOHN BEARD

After Image

20 May - 6 June 2009

Previewing from the 14 May 2009

John Buckley Gallery

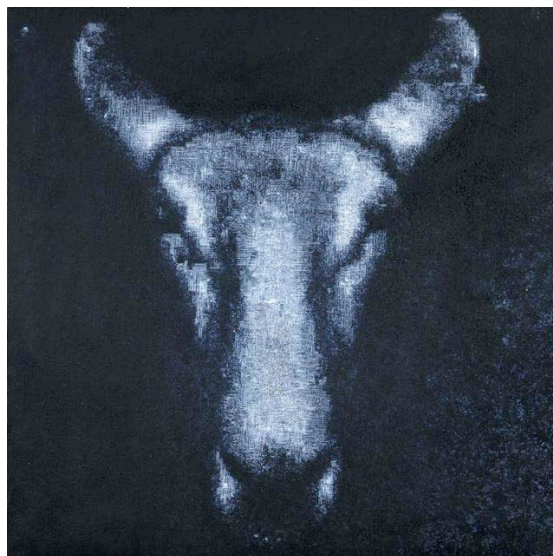
8 Albert St

Richmond VIC 3121

T + 61 3 9 428 8554

F + 61 3 9 428 8939

www.johnbuckley.com.au



John Beard, Sheep, 2007
oil and wax on linen
71 x 71 cm

An endless unveiling, veil behind veil, plane after plane of imperfect transparencies, light and space themselves, veils and unveiling towards the unveilable, the nothing, the thing again. And burial in the unique, in place of impenetrable nearnesses, cell painted on the stone of cell, art of incarceration.

Samuel Beckett
Painters of the Obstacle
1948

There is a distinctive sense when encountering a body of John Beard's works of entering into a site of composure, withheld, of images silently bespeaking truths both personal and historical; hovering presences each conveying some species quality of time-less recognition.

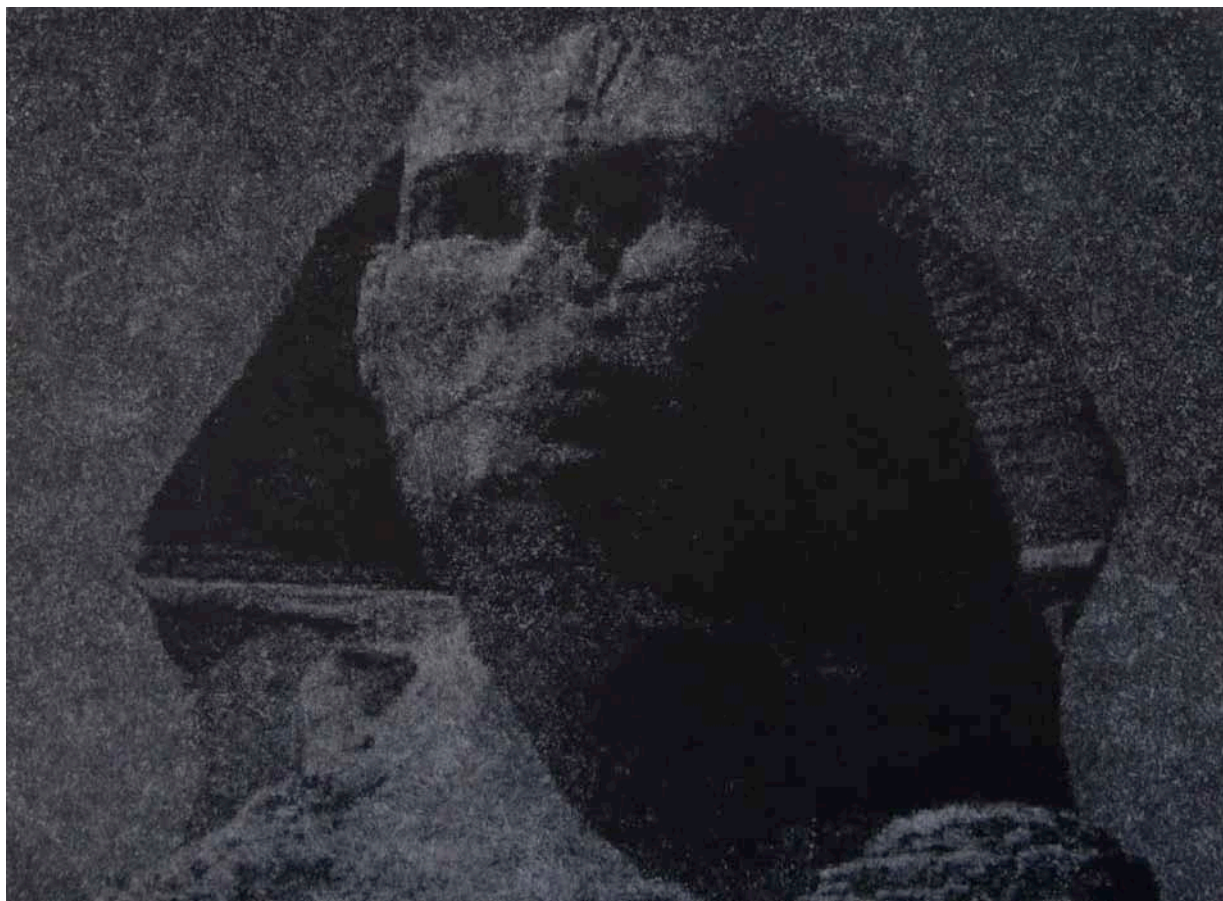
William Wright
excerpt from catalogue essay HEADLANDS: John Beard works 1993 – 2008
2009

John Beard is one of Australia's most internationally recognised painters. His work resides in the collection of the TATE Britain and has been the subject of successful exhibitions in London, Madrid, Sydney and Lisbon. A major survey of John Beard's oeuvre, curated by William Wright, is to be staged at the Drill Hall Gallery, Canberra in June 2009. After Image includes a major self portrait from the National Portrait Gallery in London, alongside the ambitiously scaled painting titled Sphinx (pictured) and several other well worked painterly waxen portraits of subjects drawn from natural, historical and cultural sources.

Recent solo exhibitions include After Adraga/The Land's End - Installation of selected works from the Tate St Ives UK, Art Gallery of New South Wales (1999) The Land's End II, Galeria Presenca, Porto, Portugal (2000) The Rock and The Head, Stephen Lacey Gallery, London (2001) John Beard, Centro de Arte Moderna, Calouste Gulbenkian Museo, Lisbon, Portugal (2006) Eight Years, John Buckley Gallery, Melbourne (2006) and Untitled, FAS, 148 New Bond Street, London (2007). In 2006 he received the Wynne Prize and the Archibald Prize in 2007 for a portrait of artist Janet Lawrence.

For further information or to arrange an interview with the artist please contact

Jessie Bridgfoot on 03 9428 8554



JOHN BEARD

After Image

20 May – 6 June 2009
Previewing from the 14 May 2009

John Buckley Gallery
8 Albert St
Richmond, 3121
T + 61 3 9 428 8554
F + 61 3 9 428 8939
www.johnbuckley.com.au

Top:

John Beard
Sphinx 2007
oil and wax on linen
180 x 250 cm

Right:

John Beard
Gorilla 2007
oil and wax on linen
71 x 71 cm

